

# REMOVE ANNOYING OBJECTS

by Steve Potashner

## Dust and rain spots.

Dust on the camera sensor and rain on the lens may be visible as spots in light areas of the image, such as the sky. They can be removed from the image with the Healing Tool (see H in the diagrams of tools below) in Camera Raw or Lightroom, or the Spot Healing Brush Tool or the Patch Tool in Photoshop. In Camera Raw and Lightroom, the Healing Tool should NOT be set to use Generative AI, as content aware technology is perfectly adequate for this task and much quicker.

## Wires.

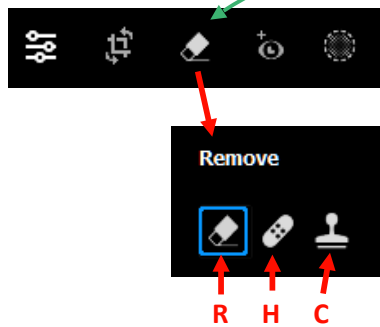
Wires with plain blue or white sky behind them are relatively easy to remove using the Healing Tool (H) in Camera Raw or Lightroom set to use Generative AI, or with the Remove Tool in Photoshop.

Wires with other objects behind them, such as clouds, trees or buildings etc are more difficult to remove. Use the Remove Tool (R) in Camera Raw or Lightroom set to use Generative AI, or the Remove Tool or Generative Fill in Photoshop.

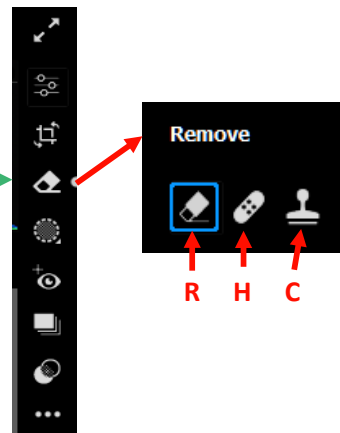
## Objects and people.

Small objects and people etc can be removed using the Remove Tool (R) in Camera Raw or Lightroom set to use Generative AI, or with the Remove Tool in Photoshop. Removal of larger objects and people with the Remove Tool (R) may be adequate in Camera Raw or Lightroom, but if better background reconstruction is required, then use Generative Fill in Photoshop.

## Tools in Lightroom:



## Tools in Camera Raw:



Remove Tools

## Tutorials:

Lightroom (& Camera Raw):

- Generative Remove Tools - <https://www.youtube.com/watch?v=j43O0TSuDhS>
- <https://www.youtube.com/watch?v=9kcyiLztCc>
- <https://www.youtube.com/watch?v=1OZLCYWbiY&t=89s>

Photoshop:

- Remove Tool - <https://www.youtube.com/watch?v=XGjwgCtupRo>
- Generative Fill - <https://www.youtube.com/watch?v=cTM853qX7cM>